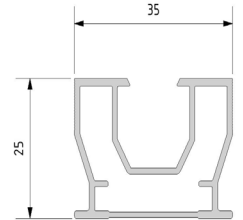


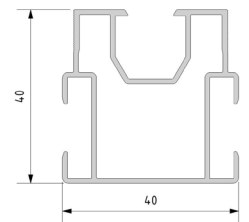
### Aluminium beam 35 x 25 mm

Material composition: ALMgSi 0,5  
 Dimension: 35 x 25 mm (w x h)  
 Expansion: ca 0,23 mm per m<sup>1</sup> at a temperature difference 10° C  
 Deflection: 0.810 mm at a free span 400 mm and a load of 1000 N in the middle  
 Weight: 0,491 kg per m<sup>1</sup>



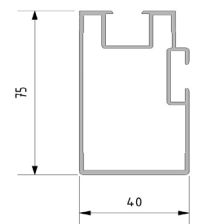
### Aluminium beam 40 x 40 mm

Material composition: ALMgSi 0,5  
 Dimension: 40 x 40 mm (w x h)  
 Expansion: ca 0,23 mm per m<sup>1</sup> at a temperature difference 10° C  
 Deflection: 0.783 mm at a free span 500 mm and a load of 1000 N in the middle  
 Weight: 0,673 kg per m<sup>1</sup>



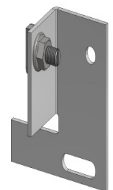
### Aluminium beam 40 x 75 mm

Material composition: ALMgSi 0,5  
 Dimension: 40 x 75 mm (w x h)  
 Expansion: ca 0,23 mm per m<sup>1</sup> at a temperature difference 10° C  
 Deflection: 1.017 mm at a free span 500 mm and a load of 1000 N in the middle  
 Weight: 1,102 kg per m<sup>1</sup>



### Mounting plate for beam 40 x 75 mm

Material composition: ALMgSi 0,5  
 Dimension: 60 x 44 x 4 mm  
 Weight: 0,050 kg per piece



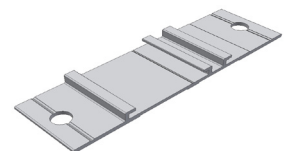
### Corner bracket for beam 40 x 40 mm

Material composition: ALMgSi 0,5  
 Dimension: 40 x 35 x 27 mm - thickness 4 mm  
 Weight: 0,028 kg per piece



### Flat mounting plate for beam 35 x 25 mm

Material composition: ALMgSi 0,5  
 Dimension: 100 x 30 mm  
 Size hole: 7 mm  
 Weight: 0,015 kg per piece



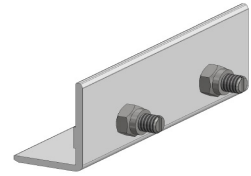
### Coupling piece for beam 35 x 25 mm

Material composition: ALMgSi 0,5  
 Dimension: 90 x 24 x 4 mm  
 Weight: 0,023 kg per piece



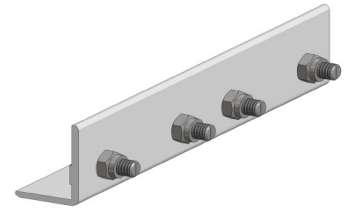
### Coupling piece for beam 40 x 40 mm

Material composition: ALMgSi 0,5  
 Dimension: 30 x 40 x 3 mm  
 Weight: 0,111 kg per piece



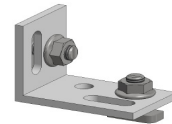
### Coupling piece for beam 40 x 75 mm

Material composition: ALMgSi 0,5  
 Dimension: 60 x 40 x 3 mm  
 Weight: 0,150 kg per piece



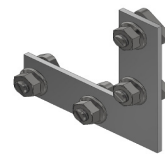
### Multi-angle for beam 40 x 40 and 40 x 75 mm

Material composition: ALMgSi 0,5  
 Dimension: 60 x 40 x 4 mm  
 Weight: 0,066 kg per piece



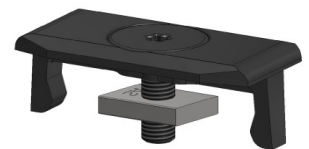
### Right-angle for beam 40 x 40 and 40 x 75 mm

Material composition: ALMgSi 0,5  
 Dimension: 90 x 90 mm  
 Weight: 0,103 kg per piece



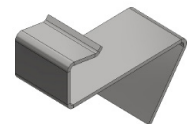
### Bracket

Material composition: PA6 with glass-fiber reinforced  
 Dimension: 40 x 21 x 20 mm  
 Weight: 0,010 kg per piece



### Start / end bracket 7 and 10 mm

Material composition: RVS steel  
 Dimension: 35 x 15 x 25 mm tickness 1 mm  
 Weight: 0,007 kg per piece



### Clip A and B

Material composition: RVS 1.4310 – AISI 301  
 Dimension:(LxBxH)  
 A - 40 x 18 x 17 mm  
 B - 40 x 30x 17 mm  
 Weight:  
 A - 0,004 kg per piece  
 B - 0,006 kg per piece

