

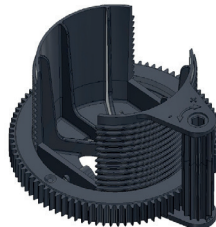
## Adjustable floor support

Aslon Systems has developed a highly innovative adjustable floor support to enable sub-constructions of terrace floors to be set at the right height quickly and easily.

The adjustable floor support can be adjusted up or downwards by means of an electric screwdriver with the correct bit, while the construction beams are already placed inside the floor support. This allows work to be completed much more quickly than floor supports that have to be manually adjusted to the correct height. The adjustable floor support can be used in combination with the Aslon substructure system and ensures a huge time saving on assembly costs.

The adjustable floor support is made of fibreglass hardened plastic and consists of the following three elements:

- a base element with screw thread on the outside and a recess for inserting a construction beam;
- a ring that is screwed onto the base element;
- a gear with which the ring can be turned up or down.



The height adjustment of the ring on which the construction beam is placed is 0-30 mm. With an extension element of 40 mm, the adjustable floor support can be raised, allowing a large variety of height differences to be achieved easily.



The big advantage of this adjustable floor support is its simplicity, 1x base element and 1x extension element. That means no stock of many different products with the chance that the wrong products will be delivered. These extension elements can be placed on top of each other, in order for different heights to be achieved. The adjustable floor supports have a free space of 46 mm between the sides, the maximum width of the construction beams that can be used is 45 mm.

### Advantages

- ✓ Very quick and accurate adjustment of sub-structures and floors by means of an electric screwdriver;
- ✓ The floor support is adjustable in height. By clicking an additional raising element onto the floor support, more variations in heights are possible;
- ✓ Can be used for aluminium, (hard) wood, plastic and bamboo construction beams up to a width of 45 mm;
- ✓ Subsidence can be corrected;
- ✓ No stock of many different products;
- ✓ All elements are fully recyclable.

### Specifications

Material composition:	PP and PA6 with glass fibre hardened plastic
Weight:	base element 76.5 grams
Load:	90 kg per floor support
Adjustable:	in height approx. 30 mm

### Applications

- ✓ Roof terrace floors
- ✓ Balcony floors
- ✓ Gallery floors
- ✓ Patio floors
- ✓ Decking floors
- ✓ Interior floors

Floors can be made accessible for wheelchair or walker use.